

165 ATJS

- Working height : 16.50 m
- Max. outreach : 10.40 m
- 250 kg including 2 people
- Diesel engine 47 HP
- Turret rotation : 359°
- 4 simultaneous movements



4 wheel drive
2 wheel steer



44
seconds



MANIACCESS



165 ATJS



Load capacity....250 kg including 2 people



Working height.....16.50 m
Platform floor height14.50 m



Overall length.....7.31 m
Length (transport position)5.45 m
Overall width2.36 m
Overall height.....2.34 m
Basket size1.08 x 1.04 m
Max. offset/
up and over clearance10.40 m/6.78 m
Ground clearance.....44.7 cm
Turning radius ins/outside2.25/5.13 m



Turret rotation359°
Basket rotation.....180°
Jib movement140°



Engine (Low emission)
PERKINS 903.2747 HP



Maxi. travel speed4.70 km/h
Inside/outside use :wind 45 km/h
Lifting time44 s



Gradeability on rough terrain.....35 %
Max. slope accepted.....5° or 9%



Hydraulic tank.....75 l.
Diesel tank90 l.



Tyres400/70-20
4 wheel drive / 2 wheel steer



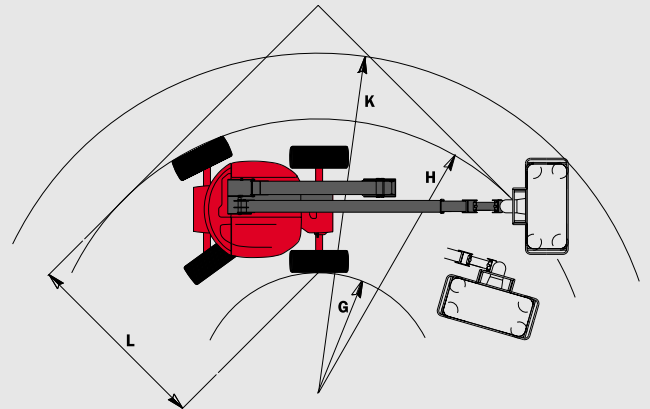
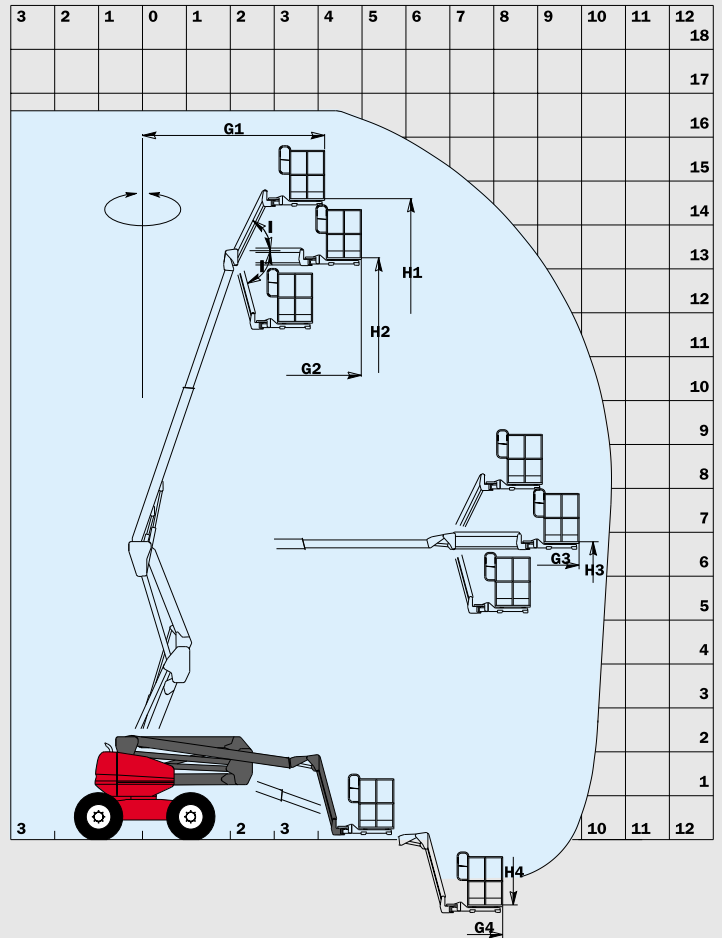
Weight8330 kg

Standard equipment

Foam filled tyres
Proportional controls
Differential lock
Front axle with limited slip
Hour meter
Tank level indicator
Warning buzzer in the basket
Rotating beacon
Lifting brackets
Safety electric pump
Auxiliary power cable

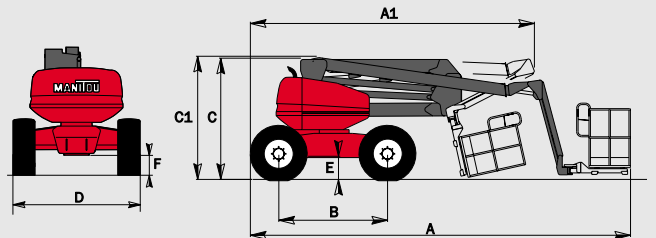
Options

All motion alarm
Working lights
Digital code
Electric plug in platform



A	7310
A1	5450
B	2100
C	2342
C1	2380
D	2360
E	447
F	370
G	2247
G1	4144
G2	4986
G3	9943
G4	8200
H	5137
H1	14600
H2	13253
H3	6785
H4	-1490
I	70°
J	6367
L	3540

mm



This publication in no way constitutes an offer and the company reserves the right to alter specification without prior notice.
The MANITOU models presented in this brochure can be supplied complete with optional equipment attachments



MANITOU B.F. S.A.
B.P. 249 - 44158 ANCENIS CEDEX - FRANCE
TEL : 33 2 40 09 10 11
EXPORT DEPARTMENT FAX : 33 2 40 09 10 97
www.manitou.fr